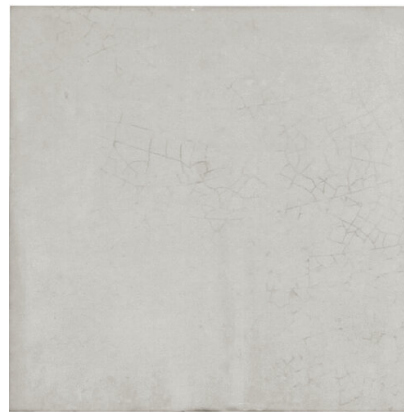


CARMEN

true tiles

DOWNTOWN PEARL 11,5x11,5

REFERENCE	SIZE (cm)	THICKNESS (mm)	GROUP
A037794	11,5x11,5	8,50	PC BIA GL



DIMENSIONS AND SURFACE PROPERTIES

Size, thickness, side straightness, flatness, orthogonality UNE-EN 14411 It accomplished all requirements

PHYSICAL PROPERTIES

Water absorption capacity	EN ISO 10545-03	< 0,5%
Flexion resistance	EN ISO 10545-04	=> 35 N/mm ²
Abrasion resistance (glazed Ceramic)	EN ISO 10545-07	III
Thermal shock resistance	EN ISO 10545-09	It stands the test
Cracking resistance	EN ISO 10545-11	It stands the test
Frost resistance	EN ISO 10545-12	It stands the test

CHEMICAL PROPERTIES

Resistance to acids	EN ISO 10545-13	GLA
Resistance to alkalis	EN ISO 10545-13	GLA
Resistance to cleaning products	EN ISO 10545-13	GA
Resistance to chemical products in swimming pool water	EN ISO 10545-13	GA
Stains resistance	EN ISO 10545-14	5

ANTI-SLIP CHARACTERISTICS

Slip resistance (Rd)	UNE-41901:2017EX	Class 2
Slip resistance (R)	DIN 51130	R10
Slip resistance (DCOF)	ANSI A137,1	0.42